



# Instructions for TACTYS® keyboard

Series T707 - T807



## ■ INSTALLATION

The keyboard can be installed in two different ways:

- placed on a worktop like a traditional keyboard.
- built in to the worktop.

## ■ CONNECTION TO THE COMPUTER

The keyboard is connected to the PC by means of the USB cables supplied.

Depending on your operating system, if your PC does not immediately recognize the keyboard, reboot your computer once the keyboard is connected by the USB cable.

## ■ REMOTE USE

The keyboard can operate remotely, up to 75m from the host computer, with an Ethernet-type remote connection (KVM brand is recommended).

## ■ USE OF THE KEYBOARD

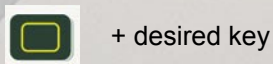
The functions of the keys are similar to an ordinary keyboard.

Certain keys control three different functions, represented by three colors: white, yellow, and blue.

► To access the functions written in white: direct entry or Alt Gr + key (e.g. for «€» or «@»)

► To access the functions written in yellow:

FCT key:



## ■ ADJUSTING THE «BEEP»

Pressing on a key triggers a low «beep». The volume of the «beep» can be adjusted as follows:

► Adjustment :



Below the minimum setting, the keyboard is muted.

## ■ KEYBOARD BLOCKING FUNCTION

To allow for cleaning without transmitting keystrokes, the keyboard has a combination of keys (FCT + backspace) that blocks the keyboard without having to turn off or unplug the PC.

A red light on the backspace key indicates the status of the keyboard: when lit, the keyboard is blocked (only the mouse cursor remains active), when unlit, the keyboard is activated.

► To lock the keyboard:



## ■ CAPS LOCK FUNCTION

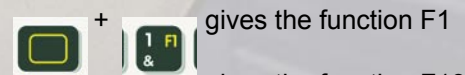
The Caps Lock key allows users to write in upper-case letters. An orange light indicates it is activated. It is reactivated differently depending on the type of computer used. Generally for a laptop, by pressing the Caps Lock key again, and for a desktop, by hitting the shift key.

## ■ FUNCTION KEYS

To access function keys F1 to F12, users must combine the FCT key with the F1 to F12 function keys at the top of the keyboard.

To access function keys F13 to F15, Caps Lock must be in operation, then the FCT combined with the function keys F1 (for F13) to 3 (F15).

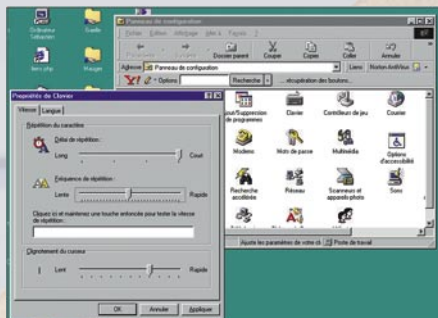
► Thus,



► With Caps Lock on,  +  gives the function F13

## ■ SETTING PARAMETERS FOR AUTOMATIC REPETITION OF KEYSTROKES

These settings can be accessed by the Windows keyboard control panel. It is possible to set the frequency of automatic repetition of a character by holding the key, as well as setting the delay between hitting the key and the beginning of the repetition.



Likewise, the Windows mouse control panel allows users to adjust the speed and mode of movement of the cursor. De même, le panneau de configuration souris de Windows permet d'ajuster la vitesse et les modes de déplacement du curseur.

## ■ WARRANTY

The keyboard benefits from a five-year off-site warranty. For more information: [www.tactys.com](http://www.tactys.com) and contact our after-sales service: Tel: +33 (0)1 46 31 16 21 - [info@tactys.com](mailto:info@tactys.com) This warranty applies under the condition of normal use of the keyboard. The warranty does not cover damage caused by inappropriate use of the product.

## ■ FAQ

- The keyboard does not beep ...  
Check that the function is activated (yellow FCT key + arrow up)
- After a long hold on a key, it no longer responds ...  
The keyboard has a learning mode that allows it to continue to work in the presence of a foreign body. Pressing a key longer than ten seconds provokes a learning sequence. =>Solution, release the key for a few seconds and it will become active again.
- The keypad does not work...  
Make sure that the keypad function (numlock) of your

computer is activated. To do this, access your PC's BIOS (when you turn on the PC) and select "numlock enable". You can also simultaneously press the yellow FCT key and Numbers Lock to activate this PC function from the keyboard. A yellow light signals the activation of the keypad.

## ■ TECHNICAL SPECIFICATIONS

The touch keyboard is made up of a sensitive film laminated on a 6-mm-thick sheet of tempered glass. The graphics on the keyboard are screen printed on the back of the glass, and are thus visible but protected. An electronic module manages all touch functions and ensures compatibility with Windows. Power supply for the keyboard is supplied by the PC via the USB cable. It is compatible with Windows and Linux. Activation force: 0 Newton. Movement: 0 mm, static system.

### ► Keyboard

Active keys operating in tiers to replicate all commands accessible by means of a standard office PC keyboard. Automatic repetition active and adjustable (delay before repetition and speed of repetition) for all keys requiring this function by means of the Windows control panel. Yellow display light for the Caps Lock key, red light for the keyboard blocking key. Dimensions 420mm x 188mm x 48mm. Weight 1.330kg to 2.150kg depending on the equipment.

### ► Touch pad

Dimensions of the active pointing surface: 77mm x 48mm, 2 tactile clicks (equivalent to right and left clicks of a mouse). Configuration of the pointer (speed of movement) via the Windows control panel.

Complies with European directives:  
technical file DPCE 010607.